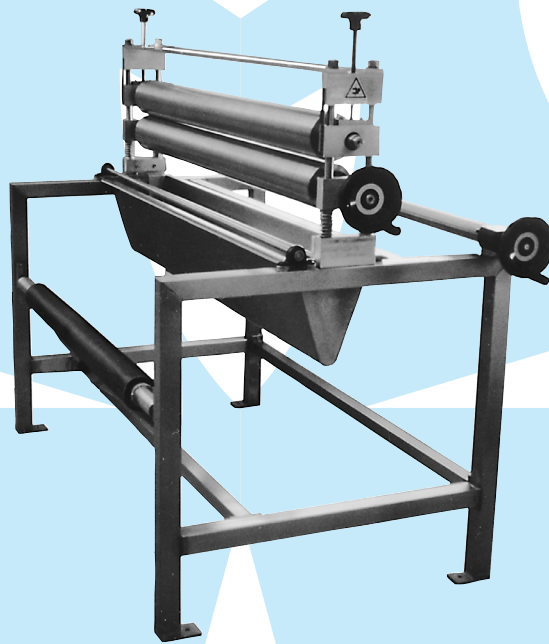


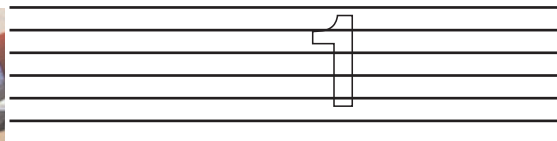


mates italiana srl

PRODOTTI & TECNOLOGIE PER I COMPOSITI AVANZATI
PRODUCTS & TECHNOLOGIES FOR ADVANCED COMPOSITES



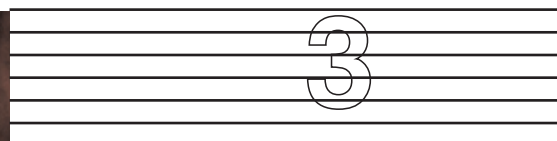
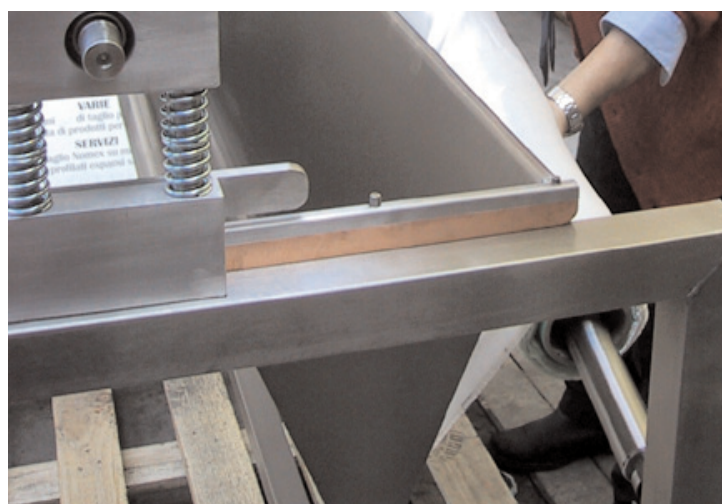
guida rapida all'uso
user guide



Fare scorrere la vaschetta.
Let the tank sliding off.



Rimuovere il contro rullo.
Remove the counter roll.



Posizionare il rotolo.
Put the fabric roll in the right position.



4

Sistemare il tessuto (dopo aver alzato il cilindro).

Slightly lift the cylinder and arrange the fabric.

5

Abbassare il cilindro regolandone la pressione da entrambe le parti.

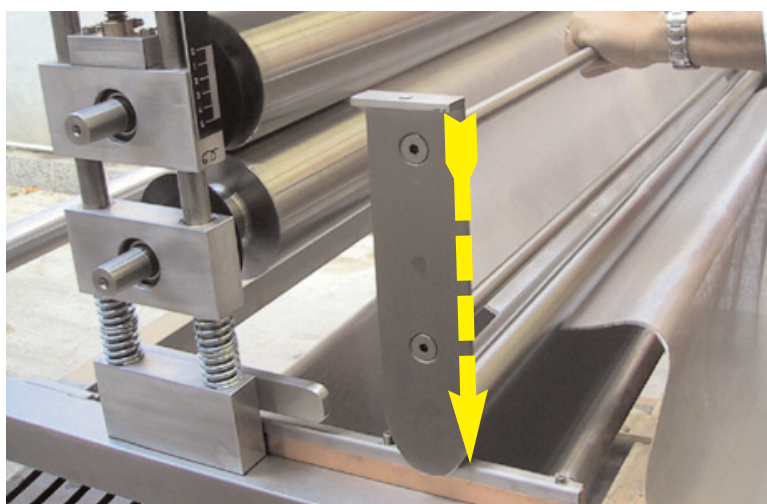
Pull down the cylinder, adjusting the pressure on both side.

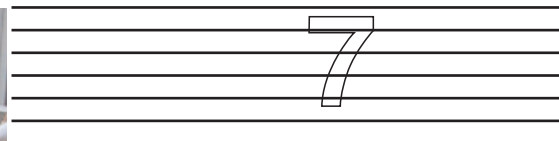
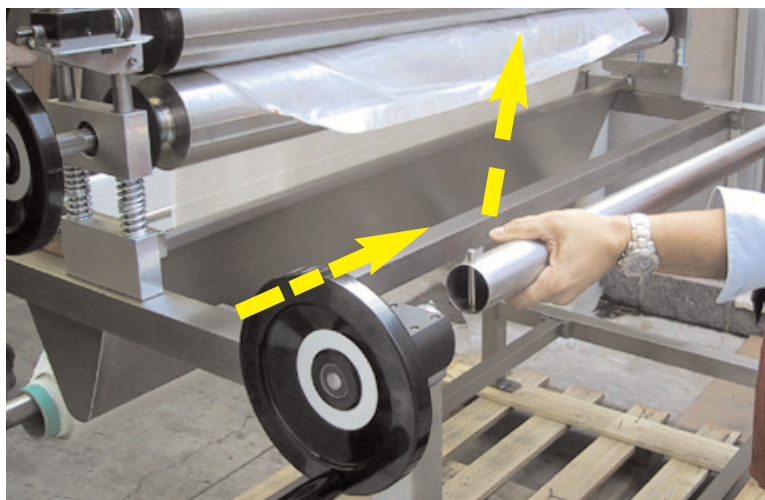


6

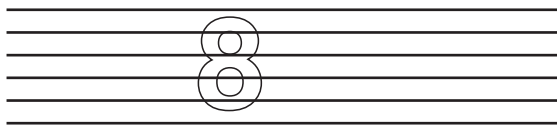
Reinserire il controrullo.

Insert again the counter roll.

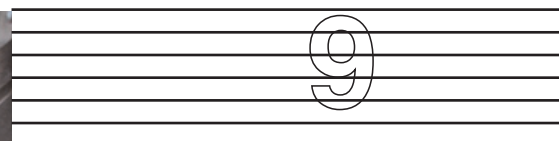
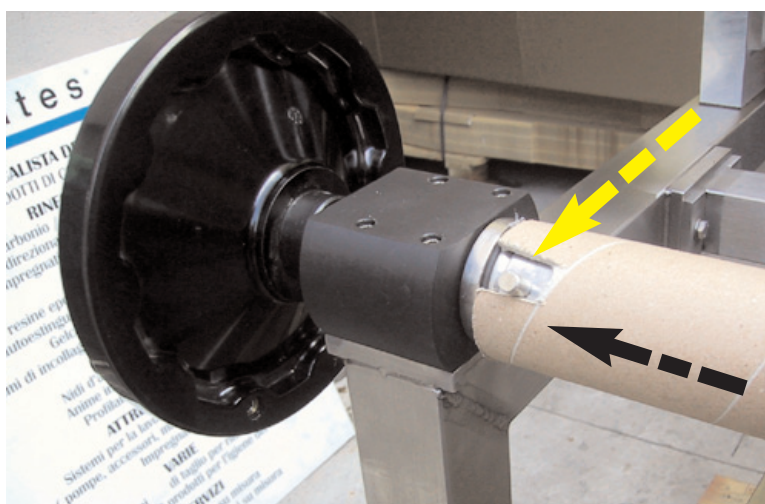




Rimuovere il rullo di traino.
Remove the dragging roll.



Preparare il tubo di avvolgi-
mento.
Keep the rolling up tube ready.

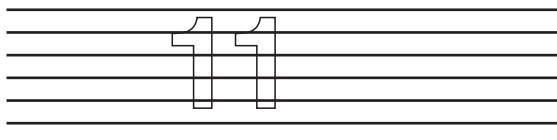


Infilarlo così.
Insert it in this way (as in the
photo).



10

Fissare il tessuto al tubo.
Fix the fabric to the rolling up tube.

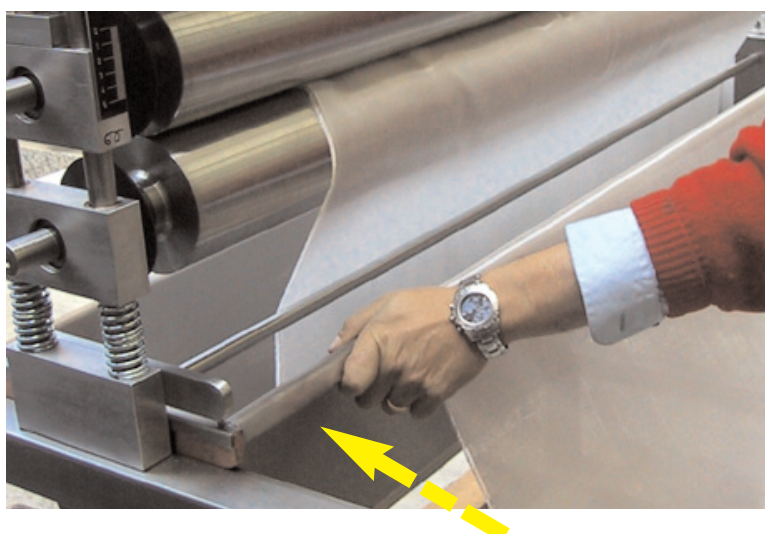


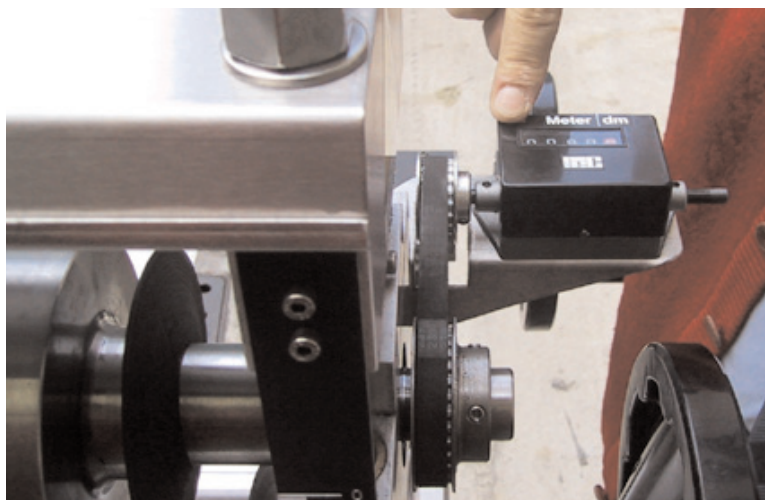
Versare la resina nella
vaschetta.
Pour the resin in the tank.



12

Spingere il gruppo vaschetta
sotto i cilindri.
Push the tank assembly under
the cylinders.



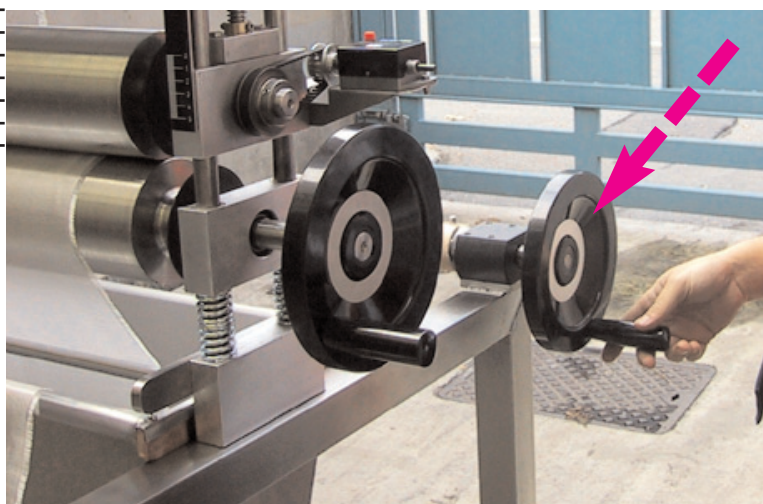


13

Azzerare il contametri.
Put at zero lever the meter-
counter.

14

Manopola da utilizzare per tira-
re il tessuto impregnato.
Handle grip to be used to
squeeze the fabric with resin.



15

Produrre impregnatore.
Pre-pregs made.

